



RE-THINKING WHAT A FLOOR CAN BE.



SaniFloor™
Self Washing Floor Systems

866.895.7264 • www.sanifloor.com

WITH SANI-FLOOR® YOUR FLOOR CAN BE...

SLIP RESISTANT

- Can dramatically reduce slip-and-fall accidents reducing worker's compensation and insurance costs.
- Grates are fiberglass reinforced resin with a non-slip textured surface.
- Floor stays dry and debris-free.
- System installs flush with the floor surface.

LABOR SAVING

- Floor is virtually self-cleaning – eliminates the need to interrupt a busy kitchen to clean up spills.
- No tracking of liquids or debris into other rooms or work areas.
- Dishwasher-safe grates remove for cleaning in a conveyor style, flight type, or 27" (686 mm) door style dish machine.
- No heavy mats to remove and clean.
- Spills can be squeegeed into the Sani-Floor® for quick containment and disposal.
- Wash water from kettles and other equipment can be drained into the Sani-Floor®.

ECO-FRIENDLY

- Significant water savings versus cleaning rubber mats.
- Replaces rubber mats and eliminates the associated bad odors.
- Only filtered water and liquids pass into your drainage (grease trap) system. Solids are caught by the filter tray for easy disposal.

VIRTUALLY SELF-CLEANING

- Programmable high pressure water nozzles blast debris off the basin sides and onto the filter tray. Washdown can be set on an hourly basis, as your operation demands. Manual push button system available.
- Filter trays easily lift out so debris can be dropped into any trash container.
- A second color set of grates can be ordered to assure cleaning rotation.
- Cleaning agents, degreasers, deodorizers can be used with the system.

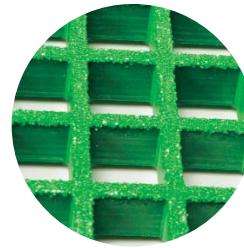
COMFORTABLE

- Grates have an inherent flex-under-load feature which reduces fatigue while providing stability and a secure walking surface.
- Grates are in approximately 20" (508 mm) x 30" (762 mm) or 20" (508 mm) x 36" (914 mm) sections for lightweight, safe removal.

Sani-Floor® Life Cycle Cost Savings Analysis

(Life Cycle Cost = Estimated Annualized Total Savings Per Day minus Total Investment, based on 18' of fully installed Sani-Floor®)

5 years	\$22,091.98
10 years	\$58,183.95
15 years	\$94,275.93
20 years	\$130,367.90



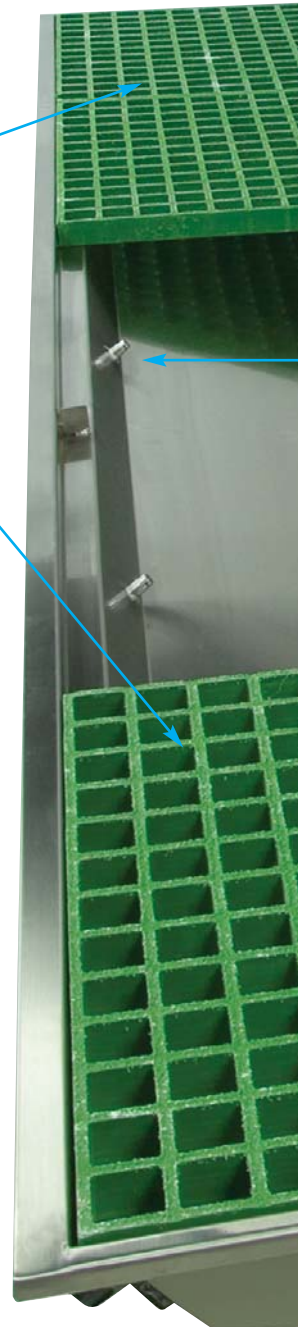
NON-SLIP GRATES

Rugged fiberglass reinforced resin has a non-slip textured surface. Liquids and debris fall through the grate into the basin below. Floor stays dry and free of debris.



MODULAR SYSTEM

Sani-Floor® is available in 22" (559 mm), 30" (762 mm) and 36" (914 mm) widths. Installation can be end-to-end or side-by-side to accommodate virtually any length or width configuration.

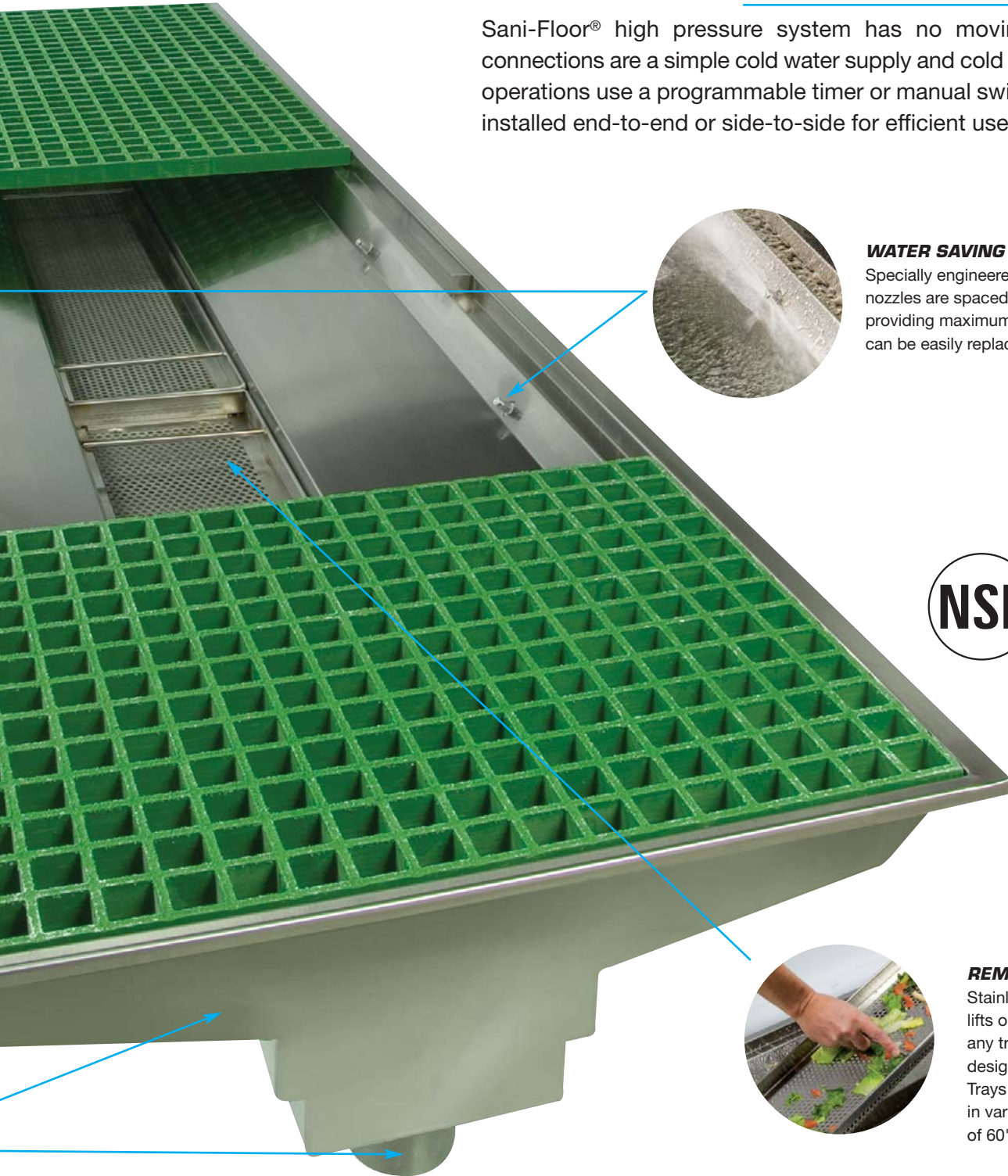


STAINLESS STEEL BASIN

Sloping sides and bottom are designed to direct debris onto the filter tray and liquids through to the drain.

SANI-FLOOR® TECHNOLOGY

Sani-Floor® high pressure system has no moving parts. Primary connections are a simple cold water supply and cold water drain. On/Off operations use a programmable timer or manual switch. Basins can be installed end-to-end or side-to-side for efficient use of floor space.



WATER SAVING SPRAY NOZZLES

Specially engineered, high pressure nozzles are spaced 20" (508 mm) providing maximum cleaning. Nozzles can be easily replaced, if ever required.



REMOVABLE FILTER TRAY

Stainless steel filter tray easily lifts out for debris disposal into any trash container. Durable design with welded handles. Trays are 8" (203 mm) wide and in varying lengths to a maximum of 60" (1524 mm) long.

SaniFloor™
Self Washing Floor Systems

RE-THINKING WHAT A FLOOR CAN BE.

INSTALLING SANI-FLOOR®

Sani-Floor® is a modular system. Basins are available in lengths of approx. 20" (508 mm) to 140" (3556 mm). Installation can be end-to-end or side-by-side to provide any length or width configuration. Width sizes are 22" (559 mm), 30" (762 mm), and 36" (914 mm).

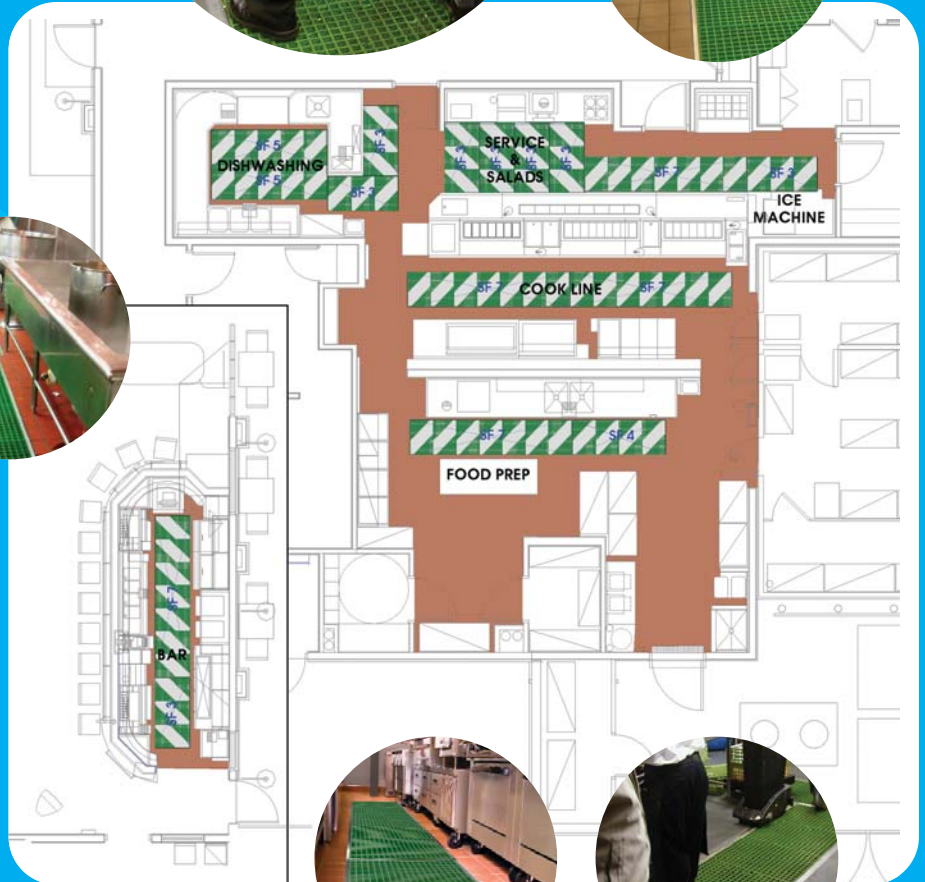
Install Sani-Floor® anywhere food, water, ice, grease, debris, waste, etc. is a safety or sanitation concern.

- Cook lines
- Prep areas
- Bars and beverage service
- Ice machines
- Scullery
- Bakery
- Foyers / Entry ways

OTHER INDUSTRIES

- Agriculture
- Industrial
- Medical
- Veterinary
- Grocery
- Laundromats

New construction installation is easy and can be done by any capable plumber or contractor. Sani-Floor® can also be designed into most slab-on-grade retro-fittings.



United States Patent #6941703 and Patents Pending



2006 FCSI Educational Foundation Innovation Showcase
Louisville Marriott
September 30, 2006

SANI FLOOR

4900 West Electric Ave. • West Milwaukee, WI 53219
phone 866.895.7264 • fax 414.902.6564 • e-mail info@sanifloor.com

www.sanifloor.com